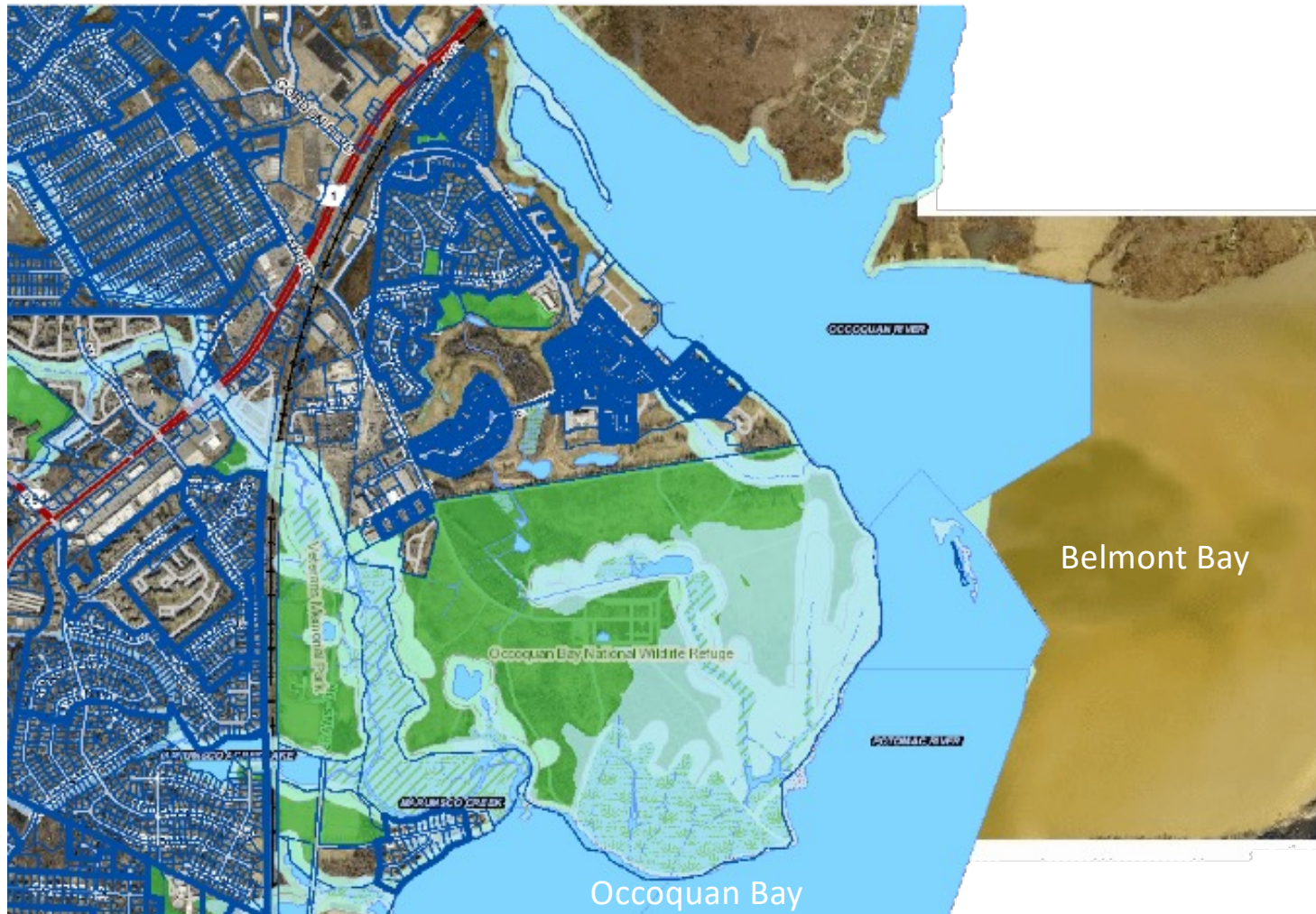


**Managing
Urban Stormwater Runoff
and the
Resource Protection Area (RPA)**

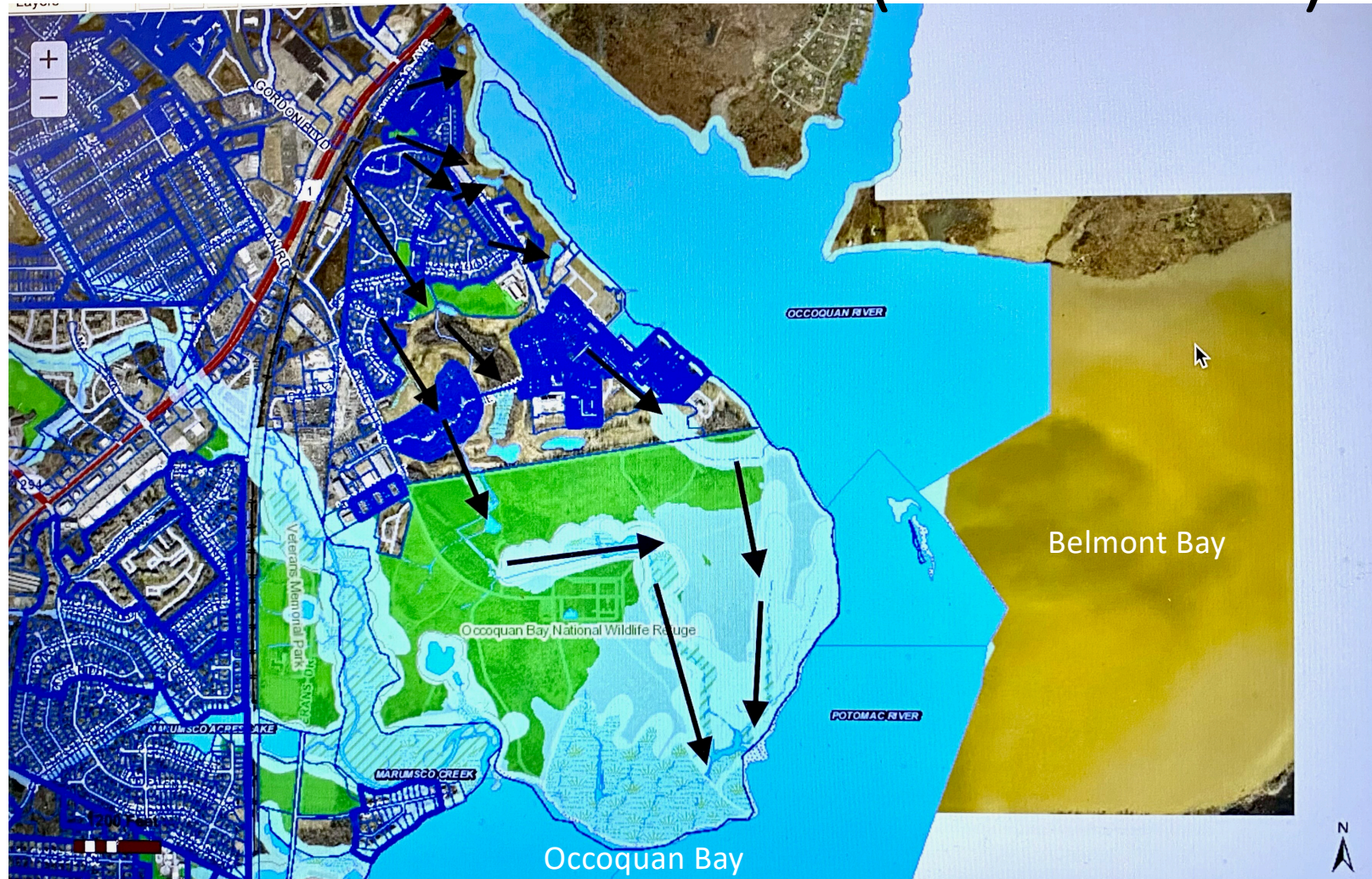
Belmont Bay, Virginia

Bill McDow, Belmont Bay Community

Belmont Bay & Occoquan Nat'l Wildlife Refuge



Weather & Stormwater Flow (Ponds & RPA)



Pressures from Belmont Bay Development



Resource Protection Area (RPA)

- **RPA** – first 100 feet of regulated corridors of environmentally sensitive land alongside or near the shorelines of streams, rivers and other waterways.
- ***Protect The Buffer*** – generally, no development, land disturbance, nor vegetation removal allowed within the RPA boundary without prior approval and suitable replacements.
 - Non-compliance is a violation of the Chesapeake Bay Preservation Ordinance

RPA Mgmt Public Hearing Bodies – PWC & FFX

- Prince William County (vacant ~10 years) - CBay Preservation Area Review Board
 - <https://www.pwcva.gov/board/chesapeake-bay-preservation-area-review-board>
 - 5 regular members, 1 alternate member; 4 year terms, coterminous with BOCS
 - Possessing backgrounds in engineering and/or environmental management.
 - Liaison: Clay Morris, Engineer III, Environmental Services, PWC Dept of Public Works
- Fairfax County (active) – Exception Review Committee
 - <https://www.fairfaxcounty.gov/landdevelopment/chesapeake-bay-preservation-ordinance>
 - <https://www.fairfaxcounty.gov/landdevelopment/exception-review-committee>
 - 9 magisterial district, 2 at large members; 4 year terms, coterminous with BOCS
 - Focus: consider RPA land disturbing exception requests (any >2500 sq ft or 25 linear ft)
 - Demonstrated knowledge of and interest in environmental issues.
 - Liaison: Brandy Neueller, Coordinator FFX Environmental Compliance & Enforcement Branch

Thank You